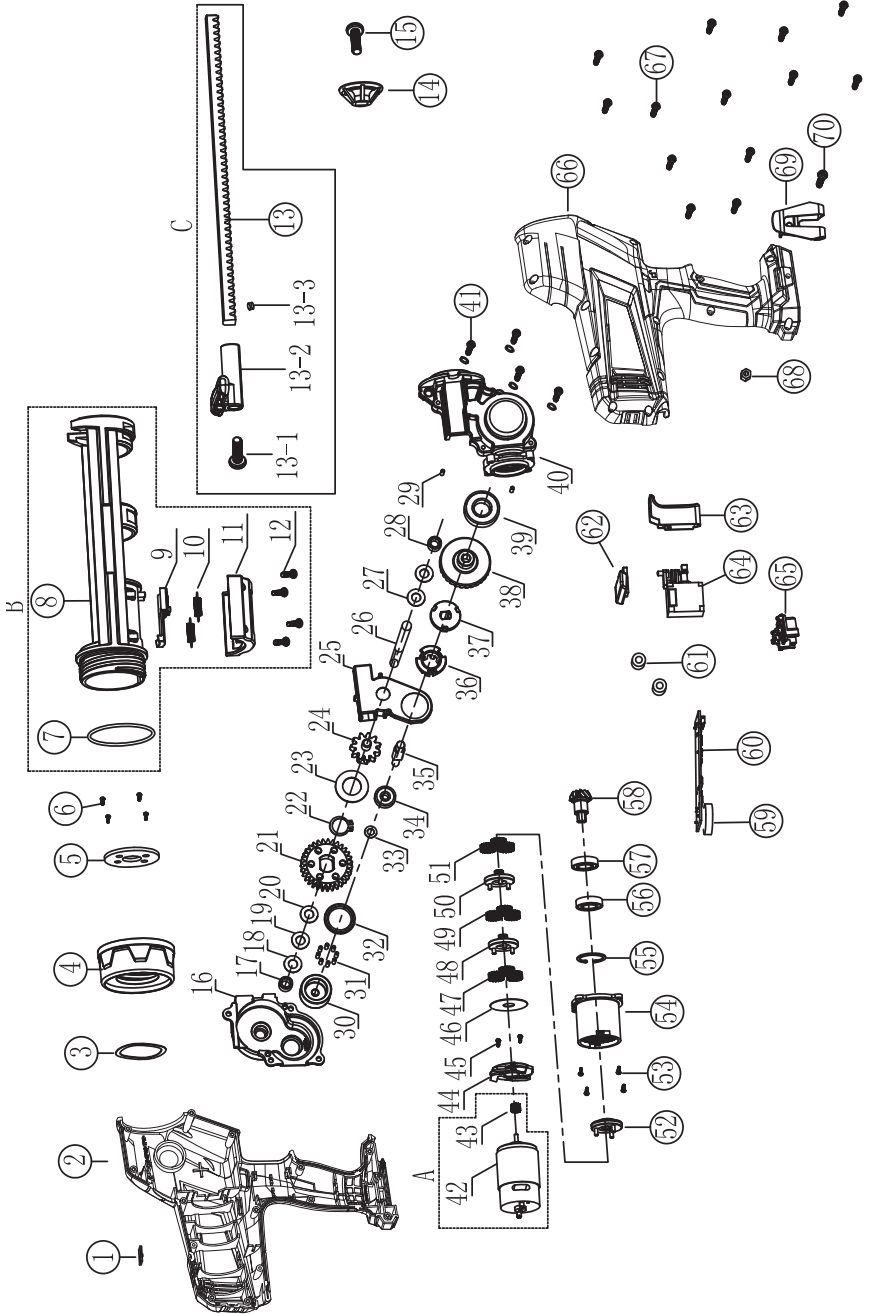


EXPLODED VIEW



SPARE PARTS LIST

1.	HALL plate	1	37.	Clutch base	1	13-1.	Cross recessed countersunk head screws	1
2.	chassis bottom cover - bottom	1	38.	large spiral bevel gears	1	13-2.	connecting rod handle	1
3.	The wave washer	1	39.	Deep groove ball bearings	1	13-3.	Magnetic block	1
4.	bracket connection sleeve	1	40.	LG770-1A front case cover	1			
5.	compression gasket	1	41.	Cross recessed pan head screws	4			
6.	Cross recessed pan head screws	4	42.	Qnhui 550 motor (18V circular shaft)	1			
7.	O-rings	1	43.	9 tooth motor pinion	1			
8.	bracket	1	44.	gearbox cover	1			
9.	bracket moving block	1	45.	M3 * 6.5 screws	2			
10.	Reset tension spring	2	46.	Gearbox gasket	1			
11.	rear cover of bracket	1	47.	18 toothed iron gear	3			
12.	tapping screw	4	48.	Planet carrier	1			
13.	a connecting rod	1	49.	18 toothed iron gear	3			
14.	bracket pistons	1	50.	Planet carrier	1			
15.	Cross recessed countersunk head screws	1	51.	18 toothed iron gear	3			
16.	front housing bottom	1	52.	Planet carrier	1			
17.	Shaft sleeve	1	53.	Cross round head screw	4			
18.	gasket	1	54.	After 1 box body	1			
19.	Elastic saddle washer	1	55.	Resilient ring for holes	1			
20.	gasket	1	56.	bearing	1			
21.	Big gear	1	57.	bearing	1			
22.	Φ 16 shaft cotter	1	58.	small spiral bevel gears	1			
23.	Flat washer	1	59.	1 speed control knob	1			
24.	a gear	1	60.	Machine plate	1			
25.	Plastic rack for gear box	1	61.	magnet ring	2			
26.	a gear shaft	1	62.	a putter	1			
27.	gasket	2	63.	Switch button	1			
28.	Shaft sleeve	1	64.	switch	1			
29.	Needle roller	2	65.	stents	1			
30.	clutch gear	1	66.	chassis bottom cover - cover	1			
31.	Needle roller	8	67.	tapping screw	14			
32.	Oil seal ring	1	68.	hexagon lock nut	1			
33.	gasket	1	69.	78# machine hook -1	1			
34.	Deep groove ball bearings	1	70.	Cross recessed pan head screws	1			
35.	Gear Box Rotation Shaft	1						
36.	Clutch frame	1						
						A.	The motor components	1
						B.	bracket assembly	1
						C.	connecting rod assembly	1